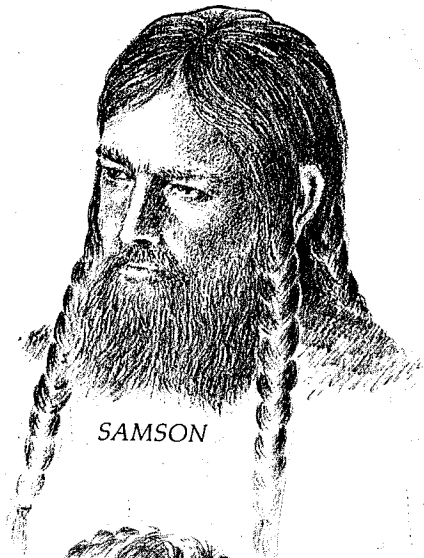


# \* \* \* 13 Bible Characters \* \* \*

## Their LIVES and Their PROBLEMS



EVE



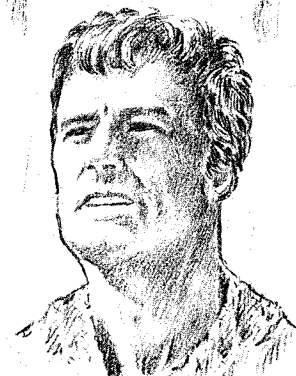
SAMSON



RUTH



SAUL



DAVID



SOLOMON

### CONTENTS

<u>Chapter</u>	<u>Page</u>
1 DECEIVED EVE. . . . .	1
2 DEPRESSED CAIN. . . . .	5
3 SCHEMING JACOB. . . . .	11
4 GUILTY BROTHERS (THE BROTHERS OF JOSEPH). . . . .	17
5 WEAK SAMSON . . . . .	23
6 PAGAN RUTH. . . . .	29
7 FLESHLY SAUL. . . . .	35
8 SELF-PITYING DAVID. . . . .	41
9 REBELLIOUS ABSALOM. . . . .	47
10 IDOLATROUS SOLOMON. . . . .	51
11 PROUD HAMAN . . . . .	55
12 PHONEY JUDAS. . . . .	61
13 IMPULSIVE PETER . . . . .	67

*"these things...are written for our admonition (warning)"--1 Cor.10:11*

Sketches used above by permission of Institute in Basic Youth Conflicts

These Bible study worksheets are published by the MIDDLETOWN BIBLE CHURCH [349 East Street, Middletown, CT 06457; Phone (203) 346-0907]. These notes may be used in the Sunday School for a quarter (13 weeks). To avoid confusion, please use a King James Version of the Holy Bible when using these notes. These studies should not be reproduced without permission. Thank you.